

cneai =

RECHERCHE + CRÉATION + TRANSMISSION

**CNEAI, LES MAGASINS GÉNÉRAUX
1, RUE DE L'ANCIEN CANAL
93500, PANTIN**

WWW.CNEAI.COM

MUSEUM WITHOUT BUILDING by YONA FRIEDMAN

**EXHIBITIONS - PERFORMANCES - WORKSHOPS - CONFERENCES
JUNE 21st - SEPTEMBER 15th, 2019**

Museum Without Building is a collaborative and itinerant proposal by Yona Friedman.

A program produced by CNEAI= in collaboration with Le Petit Versailles, the Center for Architecture-AIA, The Elizabeth Foundation for the Arts and the Emily Harvey Foundation.

INVITED ARTISTS

Fanny Allié (Us-Fr), Laëtitia Badaut-Haussmann (Fr), Théodora Barat (Fr), Bent Duo (Us), A Constructed World (Au-Fr), Pradeep Dalal (Us-In), Dépense Défensive (Fr), Yona Friedman (Fr-Hu), Haley Hughes (Us), Richard Jochum (Us-At), Vytautas Jurevicius (Us-Lt), Dana Levy (Us-Il), Flora Moscovici (Fr), Maria D. Rapicavoli (Us-It), Nicholas Vargelis (Fr-Us).

And all those who will improvise during the summer.

CURATORS

**Sylvie Boulanger (Cneai =) & Nicholas Vargelis (Le Petit Versailles)
with curatorial contributions by Dylan Gauthier (for EFA) and Benjamin Prosky (for AIA).**

Cneai = (Paris-Pantin, France)

Le Petit Versailles - Allied Productions, Inc. (New York, United States)

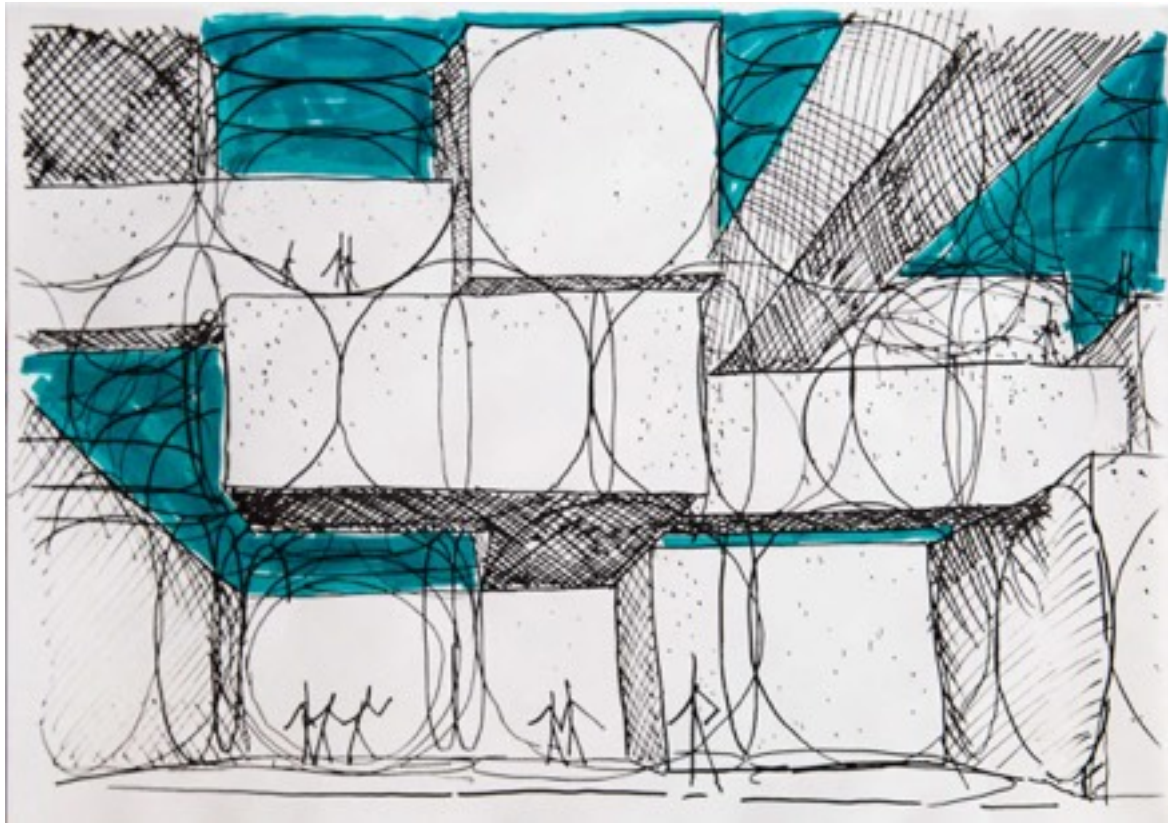
Center for Architecture – AIA (New York, United States)

The Elizabeth Foundation for the Arts (New York, United States)

Emily Harvey Foundation (New York, United States)

Museum Without Building is a collaborative and itinerant proposal by Yona Friedman, pioneer of the concepts of mobility and improvisation in architecture: the construction of an architectural structure, open to functions, creations, activations, workshops and research. The modules of Yona Friedman also function as "stages" for a living artistic ecosystem.

A selection of artists from the French art scene - Laetitia Badaut-Haussmann, Théodora Barat, Flora Moscovici, A Constructed World, Dépense Défensive - and American artists - Fanny Allié, Bent Duo, Pradeep Dalal, Haley Hughes, Richard Jochum, Vytautas Jurevicius, Dana Levy, Maria D. Rapicavoli, Nicholas Vargelis.



Yona Friedman, *Spatial City*, 1959-2019

“Starting in the late 1950's, I began with the idea of a 'mobile architecture.' It was important that the inhabitant and user could be able to design by themselves their own living quarters. This program involved a technique which allowed to easily move all parts of the structure (walls, ceilings, floors) in any position, as simple as moving furniture. The technical solution I proposed was called 'Spatial City,' made up of a spatial skeleton: 'the infrastructure,' in which living spaces were inserted. This concept was guided by the improvisation of the inhabitants, replacing traditional planning with a process of 'trial and error' for both architecture and urban design.” ~ Yona Friedman, *Biosphere*, 2018

PROGRAM AND ASSOCIATED VENUES

The program *Museum Without Building* associates four New York institutions with the Cneai around various disciplines such as visual arts, architecture and performing arts:

Center for Architecture - AIA - June 21 and 22

536 LaGuardia Pl, Manhattan

www.centerforarchitecture.org

Yona Friedman, Kenneth Frampton

Friday, June 21 - 6:30 pm / conference

Talk with Yona Friedman and Kenneth Frampton

Saturday, June 22 - 11:00 am-5:00 pm / workshop

Construction of one *Museum Without Building* with Yona Friedman, residents and public

In collaboration with Benjamin Prosky (AIA) and Steffen A. Boddeker (Columbia University)

Le Petit Versailles - from June 23 to September 15

346 East Houston Street, 247 E 2nd St, Manhattan

www.alliedproductions.org/le-petit-versailles

Laetitia Badaut-Hausmann, Théodora Barat, Bent Duo, Dépense Défensive, Yona Friedman, Vytautas Jurevicius, Haley Hughes, A Constructed World, Flora Moscovici & Nicholas Vargelis

Sunday, June 23, 2:00-9:00 pm / chapter 1

Saturday, July 27 and Sunday, July 28 / chapter 2

Saturday, August 24 / chapter 3

In collaboration with Devon Gallegos

The Elizabeth Foundation for the Arts Project Space- August 28 to September 8

323 West 39th Street, 2nd FL, Manhattan

www.projectspace-efanyc.org

Fanny Allié, Laetitia Badaut-Hausmann, Théodora Barat, A Constructed World, Pradeep Dalal, Yona Friedman, Richard Jochum, Dana Levy, Flora Moscovici, Maria D. Rapicavoli & Nicholas Vargelis.

Wednesday August 28, 6:00-8:00 pm / Opening Reception

Curatorial collaboration with Dylan Gauthier

Emily Harvey Foundation - September 5

537 Broadway #2, Manhattan

<http://www.emilyharveyfoundation.org>

Laëtitia Badaut-Hausmann, Théodora Barat, Vytautas Jurevicius & Nicholas Vargelis

Thursday, September 5, 6:00-9:00 pm / performances

In collaboration with Christian Xatrec and Alice Centamore

BIOLINES ARTISTS

Yona Friedman (FR) Born in Budapest, 1923

www.galeriepoggi.com/fr/artistes/oeuvres/14058/yonafriedman

Yona Friedman is an architect, artist, philosopher, sociologist and anthropologist. He has taught at the Massachusetts Institute of Technology, Cambridge University, Harvard University, the University of California, the University of Michigan, Princeton University.

A Constructed World (AU-FR)

www.aconstructedworld.com

A Constructed World have an expansive project that incorporates different modes of presentation and address. They have ongoing works such as Explaining contemporary art to live eels, The Social Contract and Hobbes Opera. At times they have formed groups, such as Speech and What Archive, working with artists, curators, writers, an art historian and a philosopher to make transmissions that incorporates speech, conversation, philosophical texts, music and singing.

Laëtitia Badaut-Haussmann (FR) Born in Paris, 1980

www.galerieallen.com/fr/artistes/oeuvres/2/laetitia-badaut-haussmann

The references and materials employed by Laëtitia Badaut Haussmann attest to a profound inclination towards a modernist aesthetic without, however, becoming the subject. She carries out research involving several fields including history, sociology and psychology, driven by a reflection on forms of narrative, the relationship of analogies and macrostructures. Her work is often based on contemporary design, and frequently references cinema, literature, history, and architecture.

Dépense Défensive (FR)

www.instagram.com/depensedefensive

Dépense is an artistic co-operative and publishing house founded in Paris in 2017 by artist Louis Somveille and graphic designer Martin Desinde. Through alternative economic systems, they produce and diffuse editorial projects, multiples and unique pieces. Influenced by anti-authoritarian theories and practices, 19th century French literature, the Gekiga and the Shōnens, Dépense Défensive seeks to foster a free and accessible culture of protest for all.

Théodora Barat (FR) Born in parisian region, 1985

www.cargocollective.com/theodorabarar

The work of Théodora Barat appears as a "terrain" where film, sculpture and installation mingle. Working in a permeable manner between these different media, she brings narrative to one, volume to another. Théodora is interested in degraded or changing environments, she captures their plastic peculiarities, restores them and puts them in a scene, thus trying to recreate their *Aura*.

Bent Duo (US)

www.youtube.com/watch%25253Fv=J-YDgFQJO7M

Bent Duo is a Manhattan-based experimental duo project investigating the limits of chamber music for piano and percussion and the exciting innovations that happen at the outer fringes of this repertoire. Bent Duo is an emerging ensemble, founded in 2016 by Bill Solomon and David Friend who are dedicated members of the NYC classical and new music scenes.

Haley Hughes (US) Born in Chico, 1984

www.haleyhughespaintings.blogspot.com

Haley Hughes' paintings and sculptures are visual and emotional journalism. The works include abstracted narratives of current events, drone attacks, global warming, politics and politicians as seen through a Technicolor dreamscape.

Vytautas Jurevicius (US) Born in Palanga, 1981

www.baltictriennial13.org/artist/vytautas-jurevicius

Vytautas Jurevicius a.k.a Vytas is a performance artist, working with a range of emotions of being alone, feeling lonely, comforting oneself, being alienated, disconnected and connected with oneself, and with another.

Flora Moscovici (FR) Born in Paris, 1985

www.floramoscovici.com

Flora approaches painting using the extremely varied possibilities of the medium, including its contours. Her interventions change the perception of space and call up other temporalities: pictorial gesture, site memory and history of painting between the sacred and the vernacular.

Nicholas Vargelis (FR-US) Born in Boston, 1979

www.vargelis.com

Nicholas' work combines various contemporary practices — social organisation, technological development, narrative histories, the iconography of forms (such as the history of the light bulb), with the artist as trickster or "situation inventor" who alters contexts to provoke different orders of thought. Nicholas' practice is often collaborative and is, above all, influenced by a social network of artists, writers, architects and other thinkers.

CURATORS

Sylvie Boulanger (FR)

www.cneai.com

Sylvie Boulanger is an exhibition curator, publisher and searcher in the field of contemporary art. She is head of the National Art Image Publishing Center (cneai) since 1997. She develops programs of exhibition, research, residency, editorials and a collection of artists' publications (FMRA collection)

Nicholas Vargelis (FR-US)

www.vargelis.com

In addition to working as an artist Nicholas also works as a curator and program manager for Le Petit Versailles: focusing on social and environmental issues, taking into consideration the site specific nature of the garden itself.

A COPRODUCTION CNEAI & PETIT VERSAILLES

The **Cneai** is a national center for contemporary art which for twenty years has been inviting both emerging and renowned artists whose art engages with societal issues. Their works reflect their sensitivity to all areas of human activity. Committed to the creation of communities, the Cneai fosters the financial and cultural empowerment of artists within the framework of collaborative and interdisciplinary practices: publishing, graphic design, digital creation, social work, writing, music, production, etc.

The Cneai is committed to the promotion of culture beyond the market and the development of new models for production and transmission of artistic forms, particularly those that disrupt established categories. It reaches out to all audiences at every stage of the creative process (from meeting with artists to exhibitions). The Cneai joins forces with Le Petit Versailles for the New York City based project of Museum Without Building.

Le **Petit Versailles** is a public garden from the New York City Parks Dept. and GreenThumb, created in 1996 and cared for by Allied Productions Inc. (a non-profit organization focusing on artistic creation since 1981). This garden measuring 7 x 22 meters opens onto Houston Street and Second Street, was created on the site of a former auto-body chop shop. A stage is prominently placed in the center of the garden forming a space where artists come to produce and expose their works. The garden also hosts a rich program with a wide range of artistic disciplines focusing on the environment, social and progressive questions and also take into account the site-specific nature of the garden

PARTNERS

CNEAI = National Center Edition Art Image (Paris-Pantin, France)

www.cneai.com

Le Petit Versailles – Allied Productions Inc. (New York, United States)

www.alliedproductions.org

Center for Architecture – AIA (New York, United States)

www.centerforarchitecture.org

Emily Harvey Foundation (New York, United States)

www.emilyharveyfoundation.org

Elizabeth Foundation for the Arts (New York, United States)

www.efanyc.org

Institut Français, ministère des affaires étrangères, dispositif IF Incontournable (France)

www.institutfrancais.com

Cultural Services of the French Embassy

www.frenchculture.org

New York City Department of Cultural Affairs (New York, United States)

www.1.nyc.gov/site/dcla New York State Council on the Arts (New York, United States)

www.arts.ny.gov

Green Thumb / New York City Department of Parks (New York, United States)

www.greenthumb.nycgovparks.org

Materials for the Arts (New York, United States)

www.nyc.gov/html/dcla/mfta

Office of the City Councilwoman Carlina Rivera (New York, United States)

www.carlinarivera.nyc

NYS Regional Economic Development Council (New York, United States)

www.regionalcouncils.ny.gov

CONTACT CURATORS :

SYLVIE BOULANGER : direction@cneai.com

NICHOLAS VARGELIS : nvargelis@gmail.com

Press contact : Romain Semeteys, communication@cneai.com

